

# **DISTRICT TESTING RESULTS**

**POINT PLEASANT SCHOOLS  
OCTOBER, 2016**

Measuring  
College and  
Career  
Readiness

# **NEW JERSEY'S STATEWIDE ASSESSMENT PROGRAM**

- **In 2015, New Jersey adopted the Partnership for Assessment of Readiness for College and Careers (PARCC) to replace HSPA and previous assessments in the elementary and middle school in language arts and mathematics.**
- **Students took PARCC English Language Arts and Literacy Assessments (ELA/L) in grades 3 – 11. Students who took the AP English exam were exempt from PARCC this year.**
- **Students took PARCC Mathematics Assessments in grades 3 – 8 and End of Course Assessments in Algebra I, Geometry, and Algebra II.**

# **PARCC PERFORMANCE LEVELS 650-850**

- **Level 1: Not yet meeting grade-level expectations**
- **Level 2: Partially meeting grade-level expectations**
- **Level 3: Approaching grade-level expectations**
- **Level 4: Meeting grade-level expectations**
- **Level 5: Exceeding grade-level expectations**

# POINT PLEASANT SCHOOLS 2016 PARCC GRADE-LEVEL OUTCOMES ENGLISH LANGUAGE ARTS/LITERACY

	Count of Valid Test Scores	Not Yet Meeting (Level 1)	Partially Meeting (Level 2)	Approaching Expectations (Level 3)	Meeting Expectations (Level 4)	Exceeding Expectation (Level 5)	District % >= Level 4	NJ % >= Level 4
Grade 3	211	2.8%	13.7%	22.3%	56.4%	4.7%	61.1%	47.6%
Grade 4	194	0.5%	8.2%	34.5%	50.5%	6.2%	56.7%	53.5%
Grade 5	224	0.4%	6.7%	30.8%	57.6%	4.5%	62.1%	53.2%
Grade 6	184	4.3%	9.8%	23.4%	48.4%	14.1%	62.5%	52.3%
Grade 7	197	3.0%	4.1%	18.8%	51.3%	22.8%	74.1%	56.3%
Grade 8	191	2.1%	10.5%	17.8%	48.7%	20.9%	69.6%	55.2%
Grade 9	198	3.5%	6.6%	19.7%	54.0%	16.2%	70.2%	48.5%
Grade 10	230	11.7%	7.4%	17.0%	42.2%	21.7%	63.9%	43.4%
Grade 11	155	14.8%	37.4%	20.6%	24.5%	2.6%	27.1%	39.1%

# POINT PLEASANT SCHOOLS 2016 PARCC GRADE-LEVEL OUTCOMES MATHEMATICS

	Count of Valid Test Scores	Not Yet Meeting (Level 1)	Partially Meeting (Level 2)	Approaching Expectations (Level 3)	Meeting Expectations (Level 4)	Exceeding Expectation (Level 5)	District % $\geq$ Level 4	NJ % $\geq$ Level 4
Grade 3	211	0.5%	7.6%	23.2%	55.5%	13.3%	68.7%	51.7%
Grade 4	195	1.0%	4.1%	28.7%	62.1%	4.1%	66.2%	46.6%
Grade 5	224	0%	5.8%	24.1%	63.8%	6.3%	70.1%	47.2%
Grade 6	184	2.2%	14.7%	28.8%	48.9%	5.4%	54.3%	43.0%
Grade 7	198	3.5%	8.6%	26.3%	55.1%	6.6%	61.6%	38.7%
Grade 8*	89	7.9%	13.5%	42.7%	36.0%	0%	36.0%	25.6%
Algebra I Grade 8	101	0%	1.0%	8.0%	77.0%	14.0%	91.0%	N/A
Algebra I High School	117	9.0%	21.0%	40.0%	30.0%	0%	30.0%	N/A
Algebra I							58.3%	41.2%
Geometry	216	7.4%	20.8%	38.4%	29.2%	4.2%	33.3%	27.0%
Algebra II	158	18.4%	25.3%	25.9%	28.5%	1.9%	30.4%	25.0%

# PARCC COMPARISON SCORES

## ELA 2014 - 2016

<b>GRADE</b>	<b>2014 - 2015</b>	<b>2015 - 2016</b>
3rd Grade	58%	61.1%
4th Grade	68%	56.7%
5th Grade	61%	62.1%
6th Grade	53%	62.5%
7th Grade	68%	74.1%
8th Grade	69%	69.6%
9th Grade	61%	70.2%
10th Grade	44%	63.9%
11th Grade	57%	27.1%

# PARCC COMPARISON SCORES

## MATH 2014 - 2016

<b>GRADE</b>	<b>2014 - 2015</b>	<b>2015 - 2016</b>
3rd Grade	52%	68.7%
4th Grade	45%	66.2%
5th Grade	50%	70.1%
6th Grade	56%	54.3%
7th Grade	51%	61.6%
8th Grade	37%	36.0%
Algebra - 8th	90%	91.0%
Algebra - HS	5%	30.0%
Geometry	20%	33.3%
Algebra II	14%	30.4%

# HIGH SCHOOL GRADUATION REQUIREMENTS

- **Classes 2016-2019**
  - Passing PARCC scores
  - Passing scores on alternative tests (PSAT, SAT, Accuplacer)
  - NJDOE Portfolio Appeal Process
- **Class of 2020**
  - Must take all PARCC assessments in which they are eligible
  - Passing PARCC scores
  - Passing scores on alternative tests (PSAT, SAT, Accuplacer)
  - NJDOE Portfolio Appeal Process
- **Class of 2021 and beyond**
  - Must take all PARCC assessments in which they are eligible
  - Must pass ELA 10 and Algebra I
  - NJDOE Portfolio Appeal Process



# **QUESTIONS TO GUIDE PARCC DATA REFLECTION**

- **How will we use PARCC data to identify strengths and gaps that exist in curriculum and instruction?**
- **How will we use PARCC data to inform the conversations of our educators?**
- **What can we learn about where additional professional resources are needed to meet the learning needs of all students?**

# **DATA ANALYSIS PLAN: DRILLING DOWN**

**District and School Level Data: Increased district assessments aligned to standards**

**Reviewing data for patterns and trends**

**Integrate assessment questions into existing units/ lessons**

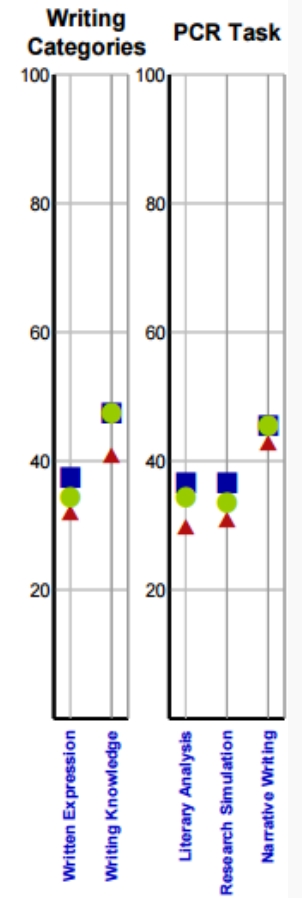
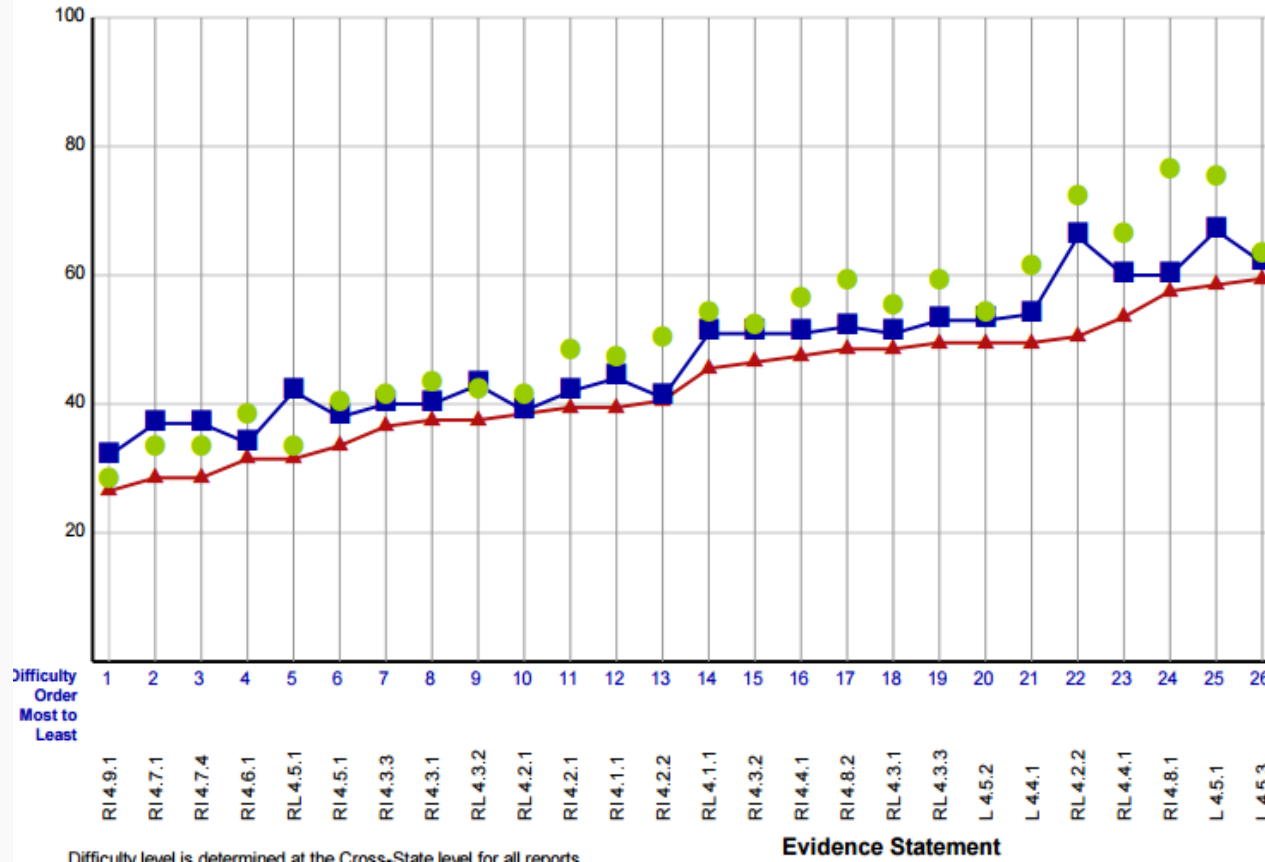
**Item analysis**

**Student-level analysis**

# DATA ANALYSIS

## Students with Valid Scores (194)

Purpose: This report presents the average percent correct by Evidence Statement for district, state and Cross-State.



# DATA ANALYSIS

Difficulty Order Most to Least	Evidence Statement	Common Core State Standard(s)	Domain
1	RI 4.9.1	RI.4.9	Reading: Informational Text
2	RI 4.7.1	RI.4.7	Reading: Informational Text
3	RI 4.7.4	RI.4.7	Reading: Informational Text
4	RI 4.6.1	RI.4.6	Reading: Informational Text
5	RL 4.5.1	RL.4.5	Reading: Literature
6	RI 4.5.1	RI.4.5	Reading: Informational Text
7	RI 4.3.3	RI.4.3	Reading: Informational Text
8	RI 4.3.1	RI.4.3	Reading: Informational Text
9	RL 4.3.2	RL.4.3	Reading: Literature
10	RL 4.2.1	RL.4.2	Reading: Literature
11	RI 4.2.1	RI.4.2	Reading: Informational Text
12	RI 4.1.1	RI.4.1	Reading: Informational Text
13	RI 4.2.2	RI.4.2	Reading: Informational Text
14	RL 4.1.1	RL.4.1	Reading: Literature
15	RI 4.3.2	RI.4.3	Reading: Informational Text
16	RI 4.4.1	RI.4.4	Reading: Informational Text
17	RI 4.8.2	RI.4.8	Reading: Informational Text
18	RL 4.3.1	RL.4.3	Reading: Literature
19	RL 4.3.3	RL.4.3	Reading: Literature
20	L 4.5.2	L.4.5	Language
21	L 4.4.1	L.4.4	Language
22	RL 4.2.2	RL.4.2	Reading: Literature
23	RL 4.4.1	RL.4.4	Reading: Literature
24	RI 4.8.1	RI.4.8	Reading: Informational Text
25	L 4.5.1	L.4.5	Language
26	L 4.5.3	L.4.5	Language

## **PATTERNS AND TRENDS**

- **Everyday Math Program made a difference**
- **Teachers are understanding the new standards better as a result of increased training and articulation**
- **Students performed better with narrative tasks**
- **Correlation between the informational writing scores and research simulation tasks**

## **SO WHAT?**

- **Continue to train teachers**
- **Maintain current programs that support teachers with resources**
  - **Achieve 3000**
  - **Newsela**
- **Articulation across grades is critical**
- **Understanding the standards and the expectations at each grade level**
  - **Review/Revise pacing guides**

# RESOURCES FOR PARENTS

- Classroom Teachers
- Building and District Administrators
- [www.understandthescore.org](http://www.understandthescore.org)

# SCHOOL LEVEL RESULTS





## POINT PLEASANT SCHOOLS 2016 PARCC SCHOOL & GRADE-LEVEL OUTCOMES ENGLISH LANGUAGE ARTS/LITERACY

	Grade 3 % >= Level 4	Grade 4 % >= Level 4	Grade 5 % >= Level 4	Grade 6 % >= Level 4	Grade 7 % >= Level 4	Grade 8 % >= Level 4	Grade 9 % >= Level 4	Grade 10 % >= Level 4	Grade 11 % >= Level 4
Nellie Bennett E.S.	65%	56%	61%						
Ocean Road E.S.	57%	59%	64%						
Memorial M.S.				62.5%	74.1%	69.6%			
Point Pleasant Borough H.S.							70.2%	63.9%	27.1%
<b>District</b>	<b>61.1%</b>	<b>56.7%</b>	<b>62.1%</b>	<b>62.5%</b>	<b>74.1%</b>	<b>69.6%</b>	<b>70.2%</b>	<b>63.9%</b>	<b>27.1%</b>

# POINT PLEASANT SCHOOLS 2016 PARCC SCHOOL & GRADE-LEVEL OUTCOMES MATHEMATICS

	Grade 3 % >= Level 4	Grade 4 % >= Level 4	Grade 5 % >= Level 4	Grade 6 % >= Level 4	Grade 7 % >= Level 4	Grade 8 % >= Level 4	Algebra I % >= Level 4	Geometry % >= Level 4	Algebra II % >= Level 4
Nellie Bennett E.S.	79%	66%	69%						
Ocean Road E.S.	56%	67%	72%						
Memorial M.S.				54.3%	61.6%	36.0%	91%		
Point Pleasant Borough H.S.							30%	33.3%	30.4%
<b>District</b>	<b>68.7%</b>	<b>66.2%</b>	<b>70.1%</b>	<b>54.3%</b>	<b>61.6%</b>	<b>36.0%</b>	<b>58.3%</b>	<b>33.3%</b>	<b>30.4%</b>

# NELLIE BENNETT ELEMENTARY SCHOOL 2016 PARCC GRADE-LEVEL OUTCOMES ENGLISH LANGUAGE ARTS/LITERACY

	Count of Valid Test Scores	Not Yet Meeting (Level 1)	Partially Meeting (Level 2)	Approaching Expectations (Level 3)	Meeting Expectations (Level 4)	Exceeding Expectation (Level 5)	School % $\geq$ Level 4	District % $\geq$ Level 4	NJ % $\geq$ Level 4
Grade 3	120	2%	14%	20%	57%	8%	65%	61.1%	47.6%
Grade 4	107	1%	6%	38%	49%	7%	56%	56.7%	53.5%
Grade 5	132	1%	8%	31%	60%	1%	61%	62.1%	53.2%

# OCEAN ROAD ELEMENTARY SCHOOL 2016 PARCC GRADE-LEVEL OUTCOMES ENGLISH LANGUAGE ARTS/LITERACY

	Count of Valid Test Scores	Not Yet Meeting (Level 1)	Partially Meeting (Level 2)	Approaching Expectations (Level 3)	Meeting Expectations (Level 4)	Exceeding Expectation (Level 5)	School % $\geq$ Level 4	District % $\geq$ Level 4	NJ % $\geq$ Level 4
Grade 3	91	4%	13%	25%	56%	1%	57%	61.1%	47.6%
Grade 4	87	0%	11%	30%	53%	6%	59%	56.7%	53.5%
Grade 5	92	0%	5%	30%	54%	10%	64%	62.1%	53.2%

# NELLIE BENNETT ELEMENTARY SCHOOL

## 2016 PARCC GRADE-LEVEL OUTCOMES

### MATHEMATICS

	Count of Valid Test Scores	Not Yet Meeting (Level 1)	Partially Meeting (Level 2)	Approaching Expectations (Level 3)	Meeting Expectations (Level 4)	Exceeding Expectation (Level 5)	School % $\geq$ Level 4	District % $\geq$ Level 4	NJ % $\geq$ Level 4
Grade 3	120	0%	4%	18%	63%	16%	79%	68.7%	51.7%
Grade 4	108	0%	5%	30%	62%	4%	66%	66.2%	46.6%
Grade 5	132	0%	5%	27%	64%	5%	69%	70.1%	47.2%

# OCEAN ROAD ELEMENTARY SCHOOL 2016 PARCC GRADE-LEVEL OUTCOMES MATHEMATICS

	Count of Valid Test Scores	Not Yet Meeting (Level 1)	Partially Meeting (Level 2)	Approaching Expectations (Level 3)	Meeting Expectations (Level 4)	Exceeding Expectation (Level 5)	School % $\geq$ Level 4	District % $\geq$ Level 4	NJ % $\geq$ Level 4
Grade 3	91	1%	12%	31%	46%	10%	56%	68.7%	51.7%
Grade 4	87	2%	3%	28%	62%	5%	67%	66.2%	46.6%
Grade 5	92	0%	8%	21%	64%	8%	72%	70.1%	47.2%